

# TYP 6: 3.5 ZIMMERWOHNUNG MITTE

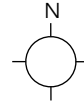
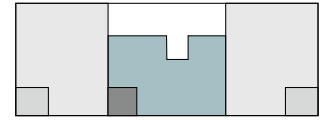
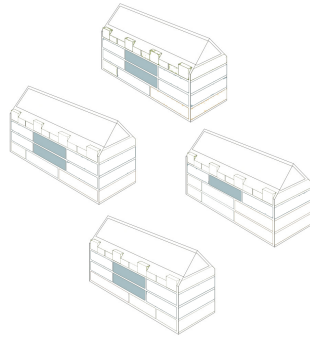
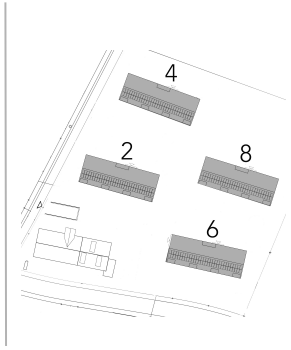
## Poststrasse 2/4/6

1. + 2. Obergeschoss  
 Nr. 2102 / Nr. 2202  
 Nr. 4102 / Nr. 4202  
 Nr. 6102 / Nr. 6202

## Poststrasse 8

2. Obergeschoss Nr. 8202

90 m<sup>2</sup> Wohnfläche  
 7.9 m<sup>2</sup> Loggia



1:75

