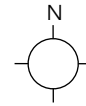
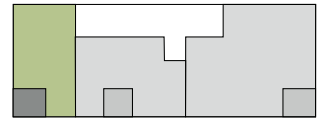
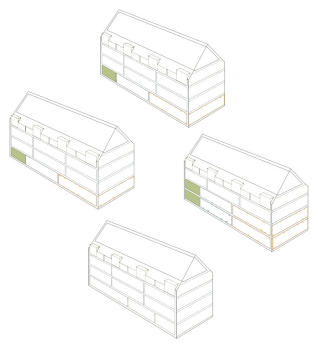
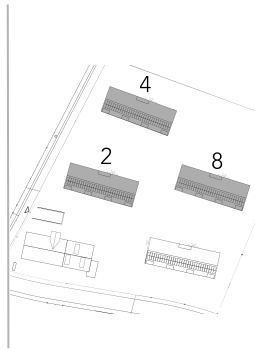


TYP 1A: 2.5 ZIMMERWOHNUNG WEST

Poststrasse 2/4
Erdgeschoss
Nr. 2003 / Nr. 4003

Poststrasse 8
Erdgeschoss Nr. 8003
1. Obergeschoss Nr 8103

61 m² Wohnfläche
9.8 m² Loggia



1:75

