

TYP 8: 3.5 ZIMMERWOHNUNG MITTE

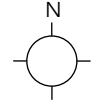
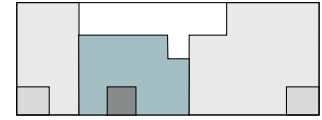
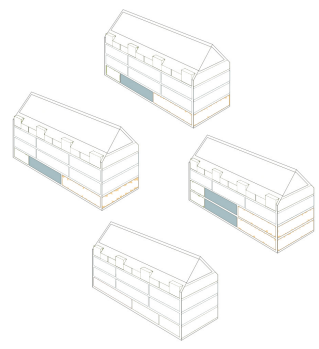
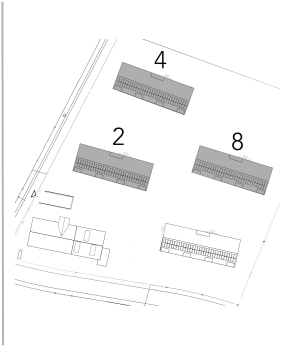
Poststrasse 2/4

Erdgeschoss
Nr. 2002 / Nr. 4002

Poststrasse 8

Erdgeschoss Nr. 8002
1. Obergeschoss Nr. 8102

90 m² Wohnfläche
8.2 m² Loggia



1:75

